

# MLT4KSC-1400DHLB



## HYBRID POWER Lighting Towers



### ✔ Product characteristics

- More less fuel \ More long run time
- Simple control system
- High efficiency
- Sturdy and durable
- Max height 9m

### Application



# MLT4KSC-1400DHLB

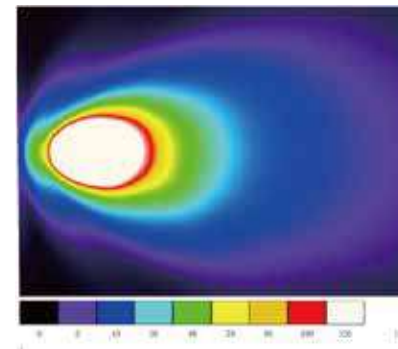
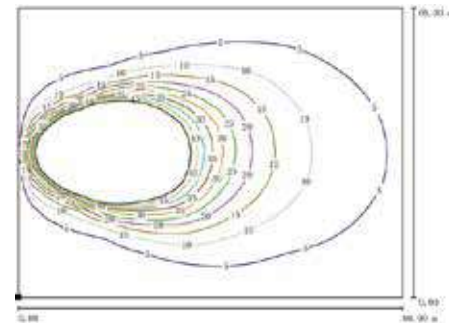
HYBRID POWER Lighting Towers

### Product performance and advantages.

- High brightness and wide range lighting: 9m mast design, and 359 degree mast rotation and 90 degree Lamp rotation, 4\*350w LED Lamp delivers 189000 lumens.
- Strong chassis structure and mast structure, suitable for a variety of operating conditions. The surface is coated with Akzo UV powder, which can keep the color for 3 years without falling off. ALKO's high stability axle and vehicle design ensure the safety of operation.
- Smart controls: with Smartgen 404 control ,that offer manual \ Auto operating mode and can provide more protection items. It can be controlled and monitor unit through phone and computer via the Cloud monitor system.
- Security system design: lighting tower level detection, parking brake and lamp pole lifting lock. Meanwhile, there are other designs such as warning during lifting and electrical safety design to ensure the safety of equipment and people.



### 4x350W-DC48V 9m Isolux curve



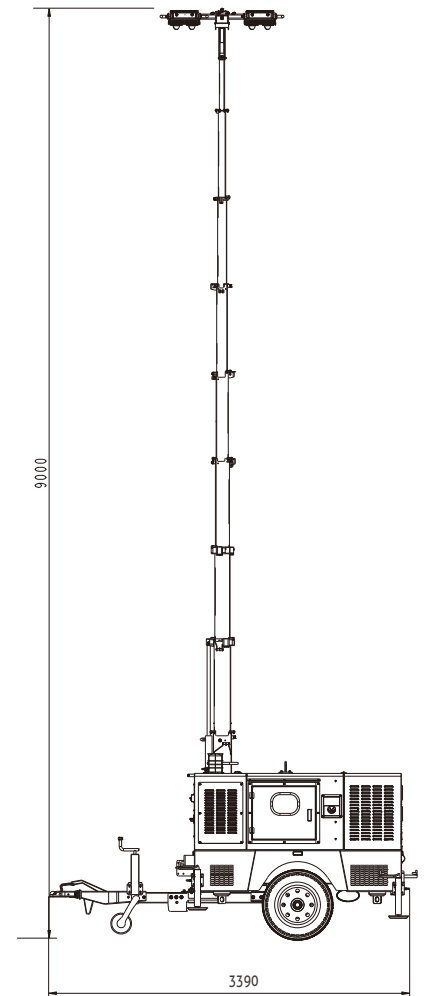
Specefication	
Rated Voltage	DC48V
Rated output	3.7KW
Environmental conditions	-10 °C--50 °C
Noise	65dBA@7m
Max road speed	80km/h
Trailer Suspension system	Rubber torsion axle(AI-ko)
Trailer attachment	Ball
Tire rim size	14"
Braking system	Inertia drum braking \parking brake
Controllor	Smartgen 404
Weight	1682 kg
Running size	3390*1650*2557
Shipping size	2430*1650*2557
Fuel tank capacity	100L
Engine	
Engine Type	Kubota Z482-E4B-CHN-3
Rated speed	1800rpm
Rated power	4.6Kw
Fuel type	Disel
BIO Fuel compatability	B5
Emission level	Tier 4
Alternator	
Modle	FB4-48/100
Brand	Sincro
Insulation	H
Type	Brushless
Rated speed	1800rpm
Battery system	
Type	AG-4850A Lithium battery pack
Rated capacity	200AH
Max cycles times	2000(@80%Dod)
Discharge depth	80%
Discharging times	6h
Charging times	3h
Lighting & Mast	
Lamp model	TG201
Lumens	189000
Mast Rising model	Hydraulic
Rotation angle	359 °,Manul
Max height	9M
Maximum wind resistance level	100km/hr
Cloud system(option)	
Type	MPMC Cloud monitoring

### Standard configuration

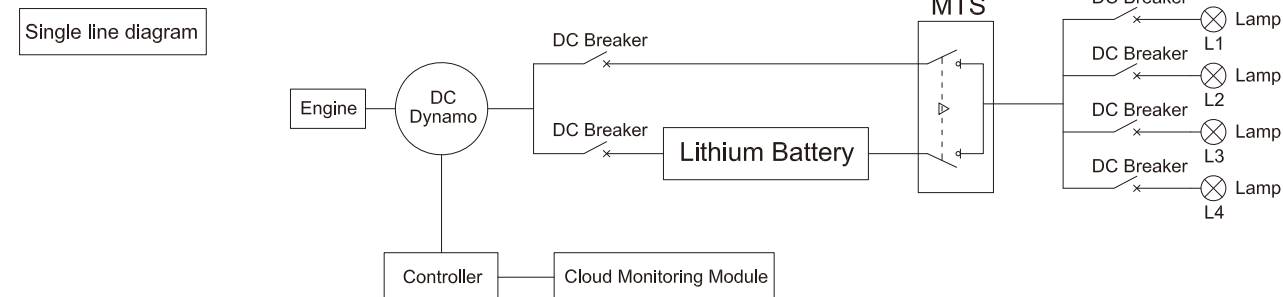
- Leak proof frame & standard canopy
- 1800KG trailer with Driving and parking brake
- Standard lifting eyes
- Hydraulic lifting power pack
- MPMC Standard control system. Integrated control for easy operation
- Heavy-duty support feet
- 100L fuel tank ,for more long run times
- Emergency push bottom

### Optional

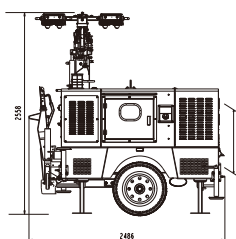
- ATS switch gear
- Cloud system
- Output plugs for DC48V
- Heater
- Ring Traction head



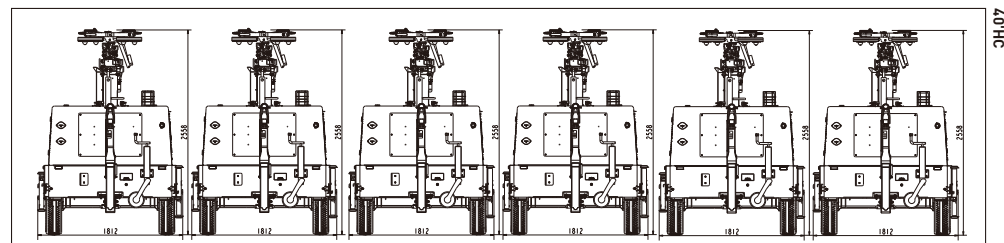
### Function diagram



### Pack dimension



### Packing diagram



### Warranty

2 years or 1500 hours from the date of shipment, whichever comes first, refer to the MPMC warranty document.

The right of interpretation belongs to MPMC

MPMC Hybrid™ - 2019™ All rights reserved