

TECHNICAL DATA



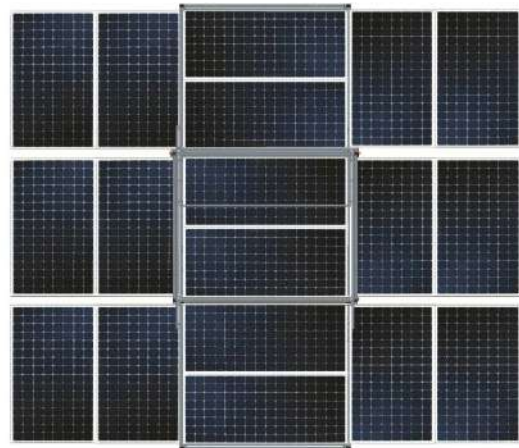
MPMC POWERTECH CORP.

HS-26

Features

HS® is a new range of secure integrated hybrid power plant. With solar power, genset and other hybrid energy storage contained within one secure unit, HS® provides a simple all in one power solution ensuring drastically reduced fuel use and CO2 emissions. Delivered in a form factor that eliminates tampering and fuel theft vulnerability, HS® also delivers class leading noise attributes with 10 dbA when in hybrid mode and just 65 dbA@7m when the external diesel generator is running. HS® is mainly developed for Off Grid Distributed Power Solutions, Hybrid Pumps, Island House Power Stations, Telecom 5G Base Station applications, etc.

Designed and built to ISO:9001 standards, HS® is straight-forward and easy to use. With its control panel rated to IP55, it offers peace of mind for those concerned about fuel security, environment and noise.



| Dimension | |
|-----------|--------|
| Length | 2950mm |
| Width | 2296mm |
| Height | 2180mm |
| Weight | 3150kg |

| General Specification | |
|-------------------------------|-----------------|
| Model | HS-26 |
| Rated System voltage | DC48V |
| Max.Solar Power | 5850W |
| Daily power consumption | 23.4KW.H(Solar) |
| Rated. genset power | 20KW/25KVA |
| Rated AC. voltage | AC400V |
| Rated DC. voltage | DC48V |
| Max.AC load power | 6KW |
| Max.DC load power | 19KW |
| Ambient Operating Temperature | -5~60°C |
| Storage Temperature | -25~60°C |

Note : Calculation basis 4h annual average effective light duration .

Solar Panel

| | |
|-----------------------|-------------------------|
| Model | SMD325M-6X12 |
| Quantity | 18pcs |
| Maximum Power | 325W |
| Maximum Power Voltage | 38.5VDC |
| Maximum Power Current | 8.45A |
| Power Tolerance | 0~+5W |
| Dimension | 1979×1019×5.6 mm(L*W*H) |
| Extending type | Sliding |
| Extending area | 36.5m ² |

Energy storage battery

| | |
|---------------------------------|--|
| Model | 6-CNFJ-200 |
| Quantity | 12pcs |
| Rated Capacity | 200AH |
| Rated Voltage | 12VDC |
| Maximum System Charging Current | 150A |
| System Discharging Current | 250A |
| Dimension | 520*241*220mm(L*W*H) |
| Type | Special colloid battery for photovoltaic |

Solar Charging Controller

| | |
|---------------------------|--|
| Model | SCH-100A |
| Quantity | 1pcs |
| Solar Rated Voltage | 48VDC |
| PV Operating Voltage | 60~150V |
| Max.Output Current | 100A |
| Self Consumption | 2W |
| Max.Conversion Efficiency | 98.5% |
| Dimension | 405*230*110mm(L*W*H) |
| Protection Function | PV array short circuit , over charging , battery reverse polarity , output short circuit |
| Communication port | RS485 |

Inverter

| | |
|----------------------|--|
| Model | H960248 |
| Quantity | 1pcs |
| Rated Power | 6000W |
| Rated Input Voltage | 48VDC |
| Rated Output Voltage | 220Vac \pm 2% |
| Output Waveform | Pure sine wave , Power frequency |
| Protection Function | Over load , short circuit , over/under voltage , |
| Overloading Capacity | 30s @ 120% load , 300ms @ 160% load |
| Dimension | 640*255*205mm(L*W*H) |
| Display Type | LCD |

Standby Diesel Generator

| | |
|----------------------|--|
| Model | MDLS25-1 |
| Quantity | 1pcs |
| Max. Power | 20kW |
| Rate Voltage | AC400V |
| Phase / Power Factor | 3P / 0.8 |
| Speed | 1500rpm |
| Engine Type | 3-Cylinder ,4-Stroke, Air-cooled,Veritical |
| Start type | Manual |
| Tank Capacity | 90 Liter |
| Sound Level | \leq 65dBA@7m |

AC.Charger

| | |
|----------------------|-----------------------|
| Model | ADY6111 |
| Quantity | 1pcs |
| Rated Power | 9000W |
| Rated Input Voltage | 400Vac \pm 10% / 3P |
| Frequency | 50Hz |
| Rated Output Voltage | 38~60VDC (Adjustable) |
| Effective | \geq 90% |
| Communication port | RS485/RS232/CAN |
| Dimension | 420*275*630 mm(L*W*H) |
| Display Type | LCD |

Contact Us

MPMC POWERTECH CORP.

Add:3rd Floor, Building 1, Powerlong City Plaza Pudong Shanghai China

Tel: +86 21 60970158-6088 Fax: +86 21 60970155

Mobile: +86-18721625036 (Lucia Liu)

Email : liuwx@mpmc-china.com

Web site : www.mpmc-china.com

MPMC reserves the right to make changes in model, technical specification, color, configuration and accessories without prior notice.

Please contact the salesman before ordering.

DISTRIBUTED BY:

© 2019 by MPMC, All right reserved.



ISO9001:2008
MPMC Generating Sets

